

LUXURY / CURATED

VT VIRTUAL TOUR

maven
RETAIL

PAMELA MENDELSON
office 415.404.6650
pam@mavenproperties.com
DRE #00953050

LORRAINE ADNEY
office 312.420.1772
lorraine@mavenproperties.com

CATHERINE MEUNIER
office 415.806.5566
catherine@mavenproperties.com
DRE #01843732

ALI MCEVOY
office 415.404.7343
ali@mavenproperties.com
DRE #01930635

HALEY KLEIN
office 415.404.7330
haley@mavenproperties.com
DRE #01907308

JOAN RUYLE
office 312.420.1772
joan@mavenproperties.com
DRE #00953050

KRYSTAL CHANNICK
office 415.462.5940
krystal@mavenproperties.com
DRE #01969079

SANTINO DEROSE
office 415.404.7337
sd@mavenproperties.com
DRE #01338326

GLORIA NORDBAKK
office 415.225.0626
gloria@mavenproperties.com
DRE #02207407



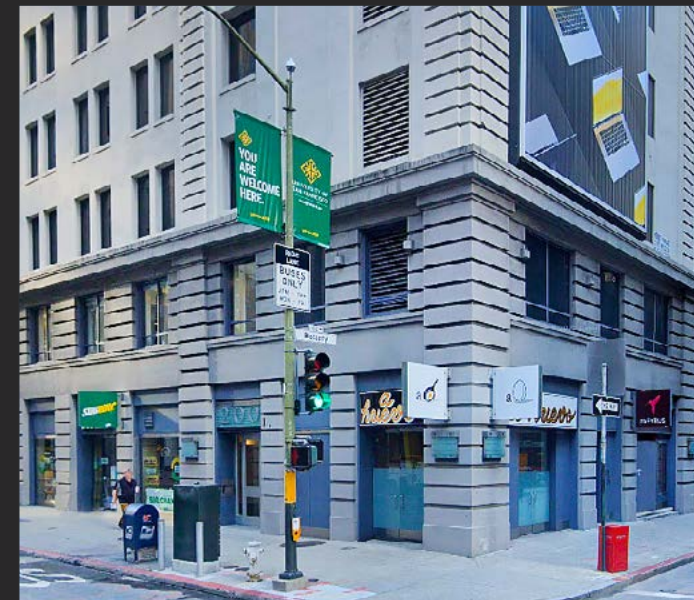
135 POST | UNION SQUARE | SF
10,000 SF Ground + 12,000 SF Second Level



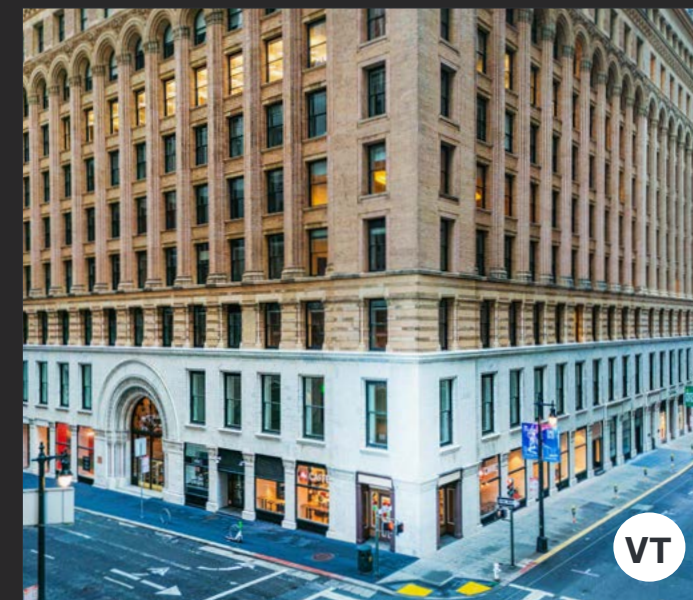
332 PINE | FIDI | SF
5,370 SF



2055 CHESTNUT | PACIFIC HEIGHTS | SF
31,248 SF Ground



200 PINE | UNION SQUARE | SF
308 - 1,184 SF



220 MONTGOMERY | FIDI | SF
3,544 SF & 4,117 SF



345-343 SUTTER | UNION SQUARE | SF
1,321 SF & 2,700 SF



369 PINE | FIDI | SF
4,473 SF



150 POST | UNION SQUARE | SF
6,444 SF Ground



501 JACKSON | FIDI | SF
1,040 SF - 1,740 SF



950 MARKET | MID MARKET | SF
6,000 SF Ground



333 PINE | FIDI | SF
4,988 SF



59 GRANT | UNION SQUARE | SF
+/- 1,625 SF



139 TOWNSEND | SOUTH BEACH | SF
6,201 SF



201 HALLECK | PRESIDIO | SF
6,200 SF + 2,700 SF Outdoor Patio



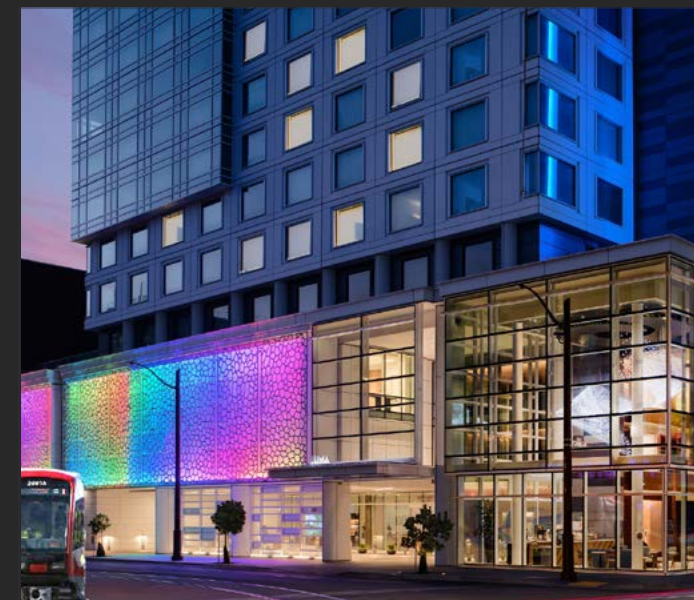
2225 FILLMORE | PACIFIC HEIGHTS | SF
+/- 2,000 SF + 400 SF Mezzanine



2261 FILLMORE | PACIFIC HEIGHTS | SF
4,662 SF Basement + 1,013 SF Mezzanine



1010 16TH | POTRERO | SF
2,855 SF



1030 3RD | MISSION BAY | SF
3,988 SF



2224 UNION | COW HOLLOW | SF
3,000 SF - 7,040 SF



58 GEARY | UNION SQUARE | SF
+/- 3,549 SF on ground + 1,594 SF lower level



217 POWELL | UNION SQUARE | SF
2,500 - 5,000 SF